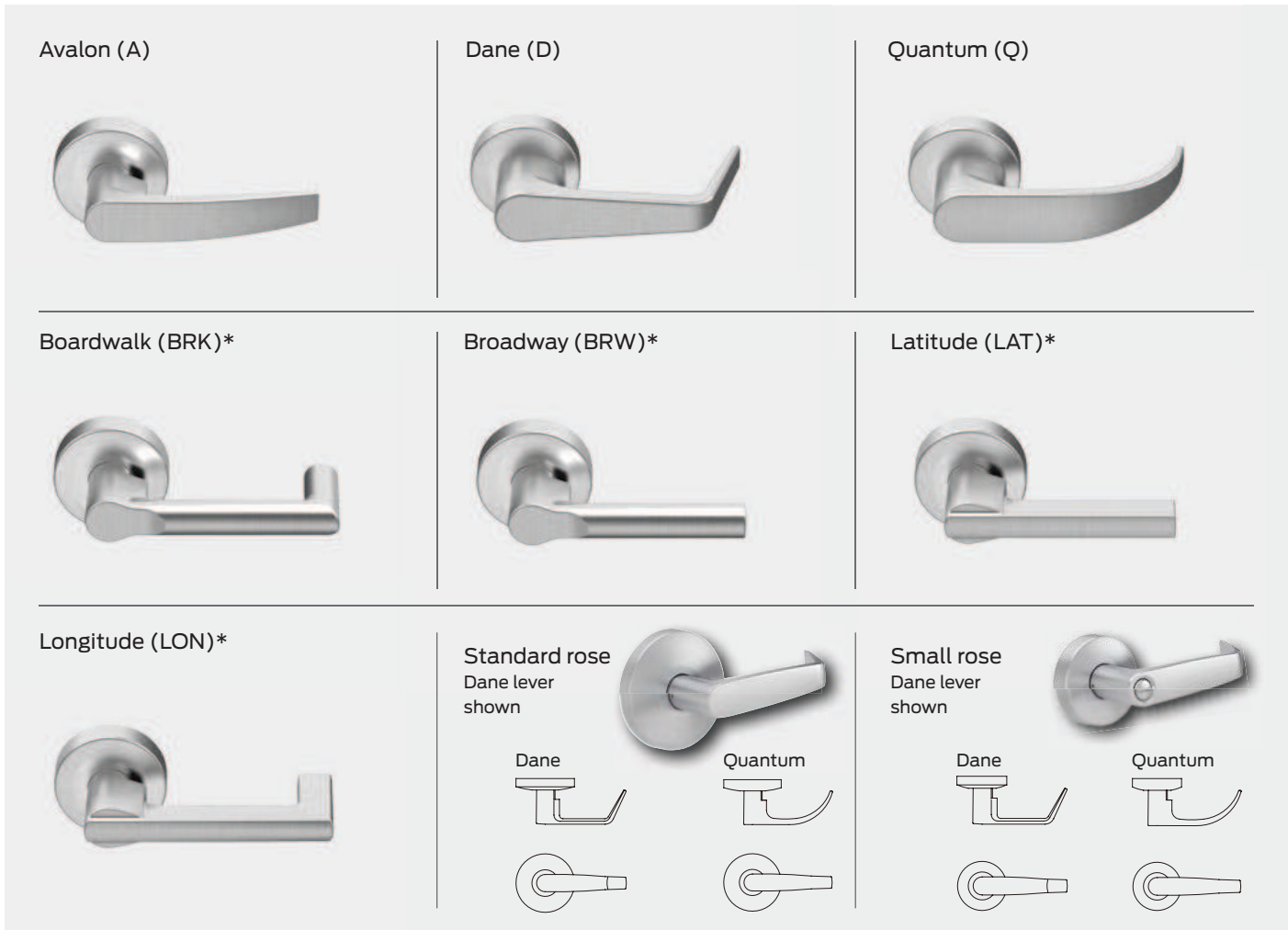


Designs and styles

# Levers styles

Levers are solid pressure cast zinc, finished to match mating parts. Roses are wrought brass or bronze installed over steel through-bolted rose inserts. A spring-loaded retainer secures levers. Secure side retainer cannot be depressed without a key that operates the lock.



**Abrasive lever options**

Avalon, Dane, and Quantum levers are available with an abrasive strip along the length of the lever to identify entrances to areas hazardous to the disabled. To order add 6 (for example, 6DA for Dane lever or 6QU for Quantum lever) to the order number.

**Trim finishes chart**

Description	ANSI No.	Availability
Bright brass	605	All trim
Satin brass	606	Not on small rose
Oil rubbed bronze	613	All trim
Satin nickel	619	All trim
Matte black	622	All trim
Bright chrome	625	All trim
Satin chrome	626	All trim
Aged bronze	643e	All trim

\* Available in Q1 2017