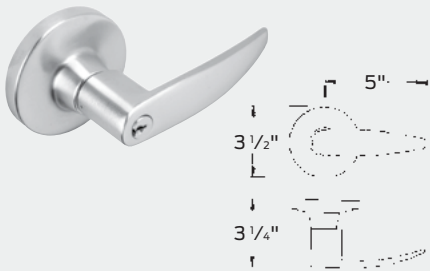


Designs and styles

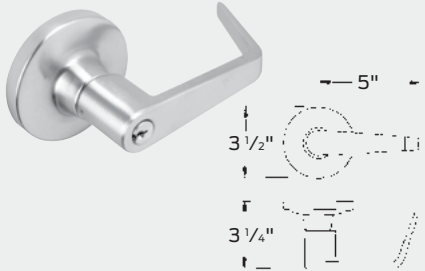
# Lever styles

Levers are solid pressure cast zinc, finished to match mating parts. Roses are wrought brass or bronze installed over steel throughbolted rose inserts. Pressure Release™ levers are standard. Levers are secured by a spring-loaded retainer. Retainer cannot be depressed when locks have been locked.

Avalon (A)



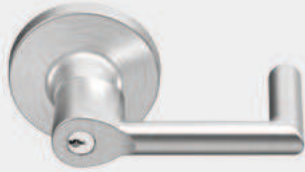
Dane (D)



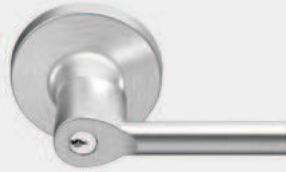
Quantum (Q)



Boardwalk (BRK)\*



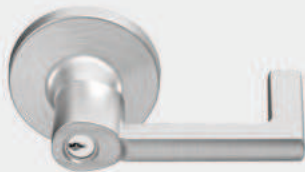
Broadway (BRW)\*



Latitude (LAT)\*



Longitude (LON)\*



\* Available in Q1 2017

**Abrasive coated levers**

Avalon, Dane, and Quantum levers are available with abrasive coating along the length of the lever to identify entrances to hazardous areas to the handicapped. To order add: "with abrasive coated outer lever" in detail section of order.

**Trim finishes chart**

Description	ANSI No.	Available on
Bright brass	605	All trim
Satin brass	606	All trim
Oil rubbed bronze	613	All trim
Satin nickel	619	All trim
Matte black	622	All trim
Bright chrome	625	All trim
Satin chrome	626	All trim
Aged bronze	643e	All trim